

HIGH PRESSURE PLUNGER PUMP



WWW.BLASTING.SU

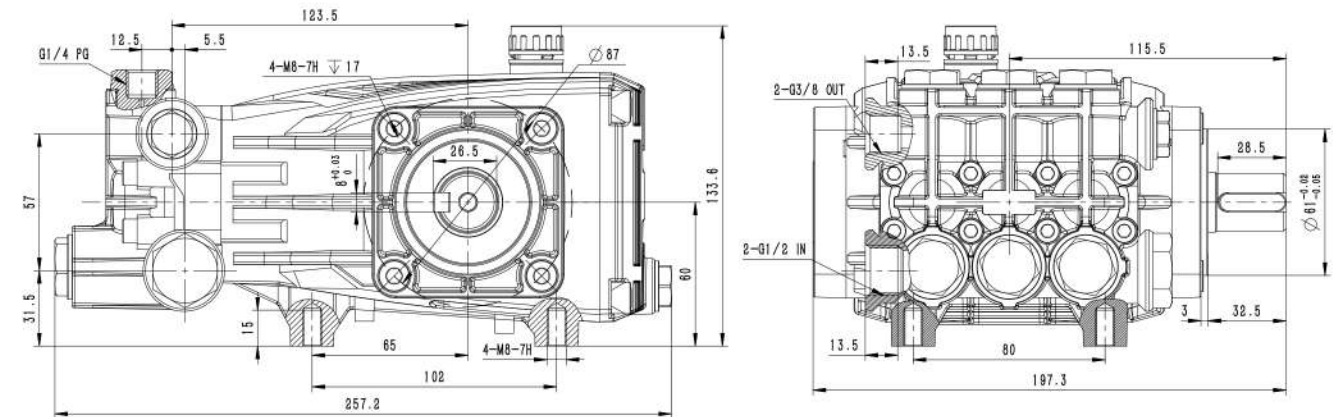




HIGH PRESSURE PLUNGER PUMP



JPB-N

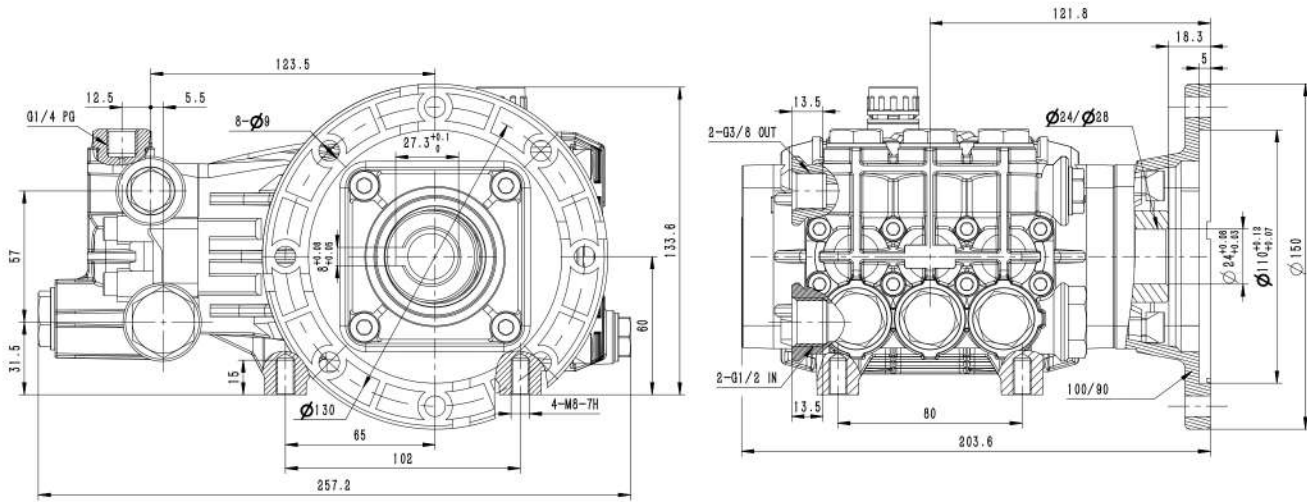


JPB-N 1450rpm N Shaft ϕ 24mm

Model	Flow		Pressure		Power		Speed	Plunger Dia	Stroke
	L/min	gpm	Bar	psi	hp	kw			
JPB0510-N	5	1.3	100	1450	1.5	1.1	1450	18	5
JPB0818-N	8	2.1	180	2610	4	3	1450	18	7
JPB1120-N	11	2.9	200	2900	6	4	1450	18	10
JPB1320-N	13	3.4	200	2900	7	5.5	1450	18	12
JPB1520-N	15	4	200	2900	7.5	5.5	1450	18	14
JPB1910-N	19	5	100	1450	5.5	4	1450	20	14

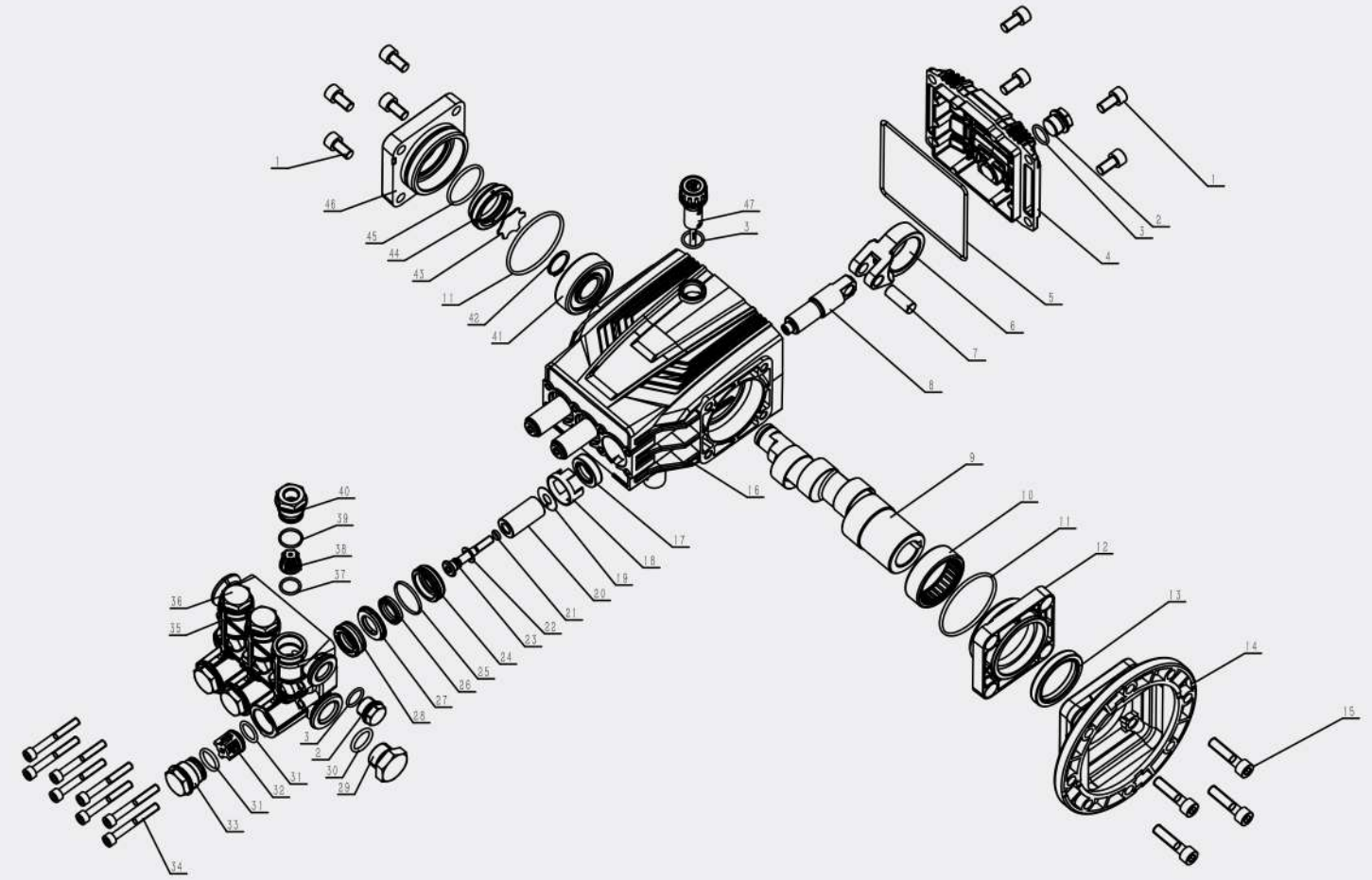


JPB-C



JPB-C 1450rpm C/Shaft Φ24mm/Φ28mm

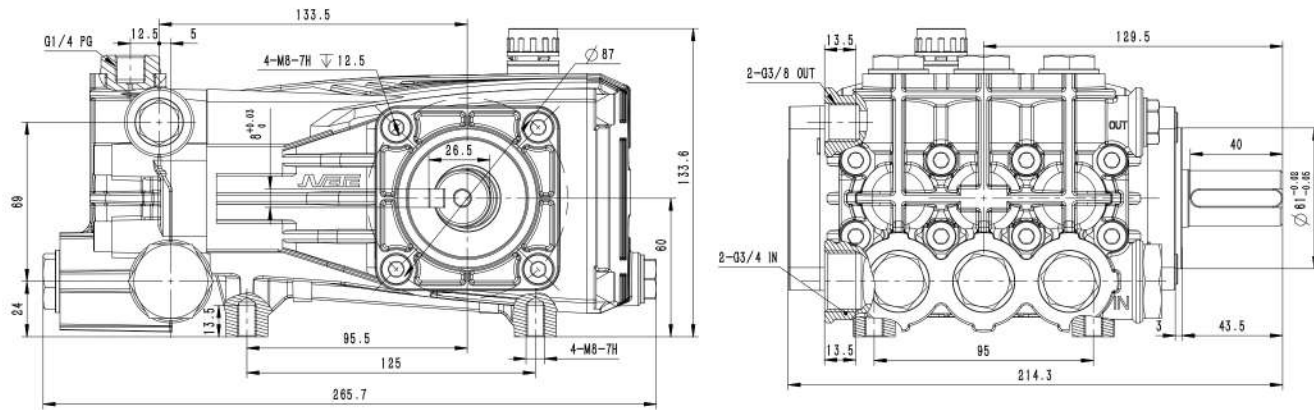
Model	Flow		Pressure		Power		Speed	Plunger Dia	Stroke
Model	L/min	gpm	Bar	psi	hp	kw	rpm	mm	mm
JPB0510-C	5	1.3	100	1450	1.5	1.1	1450	18	5
JPB0818-C	8	2.1	180	2610	4	3	1450	18	7
JPB1120-C	11	2.9	200	2900	6	4	1450	18	10
JPB1320-C	13	3.4	200	2900	7	5.5	1450	18	12
JPB1520-C	15	4	200	2900	7.5	5.5	1450	18	14
JPB1910-C	19	5	100	1450	5.5	4	1450	20	14



No.	Commodity	Qty	No.	Commodity	Qty
1	Hexagon screw	8	25	O ring	3
2	Plug	2	26	18 Aux water seal	3
3	O ring	3	27	JPB18 water seal pressure ring	3
4	Back cover	1	28	18 mainly water seal assy	3
5	O ring	1	29	Plug	1
6	Connect Rod	3	30	O ring	1
7	Plunger Pin	3	31	O ring	6
8	Plunger	3	32	JPB inlet checking valve	3
9	Crankshaft	1	33	JPB inlet checking valve screw	3
10	Nedle bearing	1	34	Hexagon screw	8
11	O ring	2	35	JPB18 pump manifold	1
12	Connecting Flange C.	1	36	JPB outlet checking valve screw	2
13	TC oil seal	1	37	O ring	3
14	Motor f connecting fange	1	38	JPB outlet checking vavle	3
15	Hexagon screw	4	39	O ring	3
16	JPB crankcase	1	40	JPB gauge connector	1
17	TC4 oil seal	3	41	ball bearing	1
18	JPB bracket	3	42	circlips A	1
19	JPB wipper	3	43	JPD level indicator	1
20	JPB18 ceramic tube	3	44	JPD oil window	1
21	O ring	3	45	O ring	1
22	JPB seal pad	3	46	JPB side cover	1
23	JPB locking screw	3	47	JPD Dipstick	1
24	JPB18 aux water seal bushing	3			

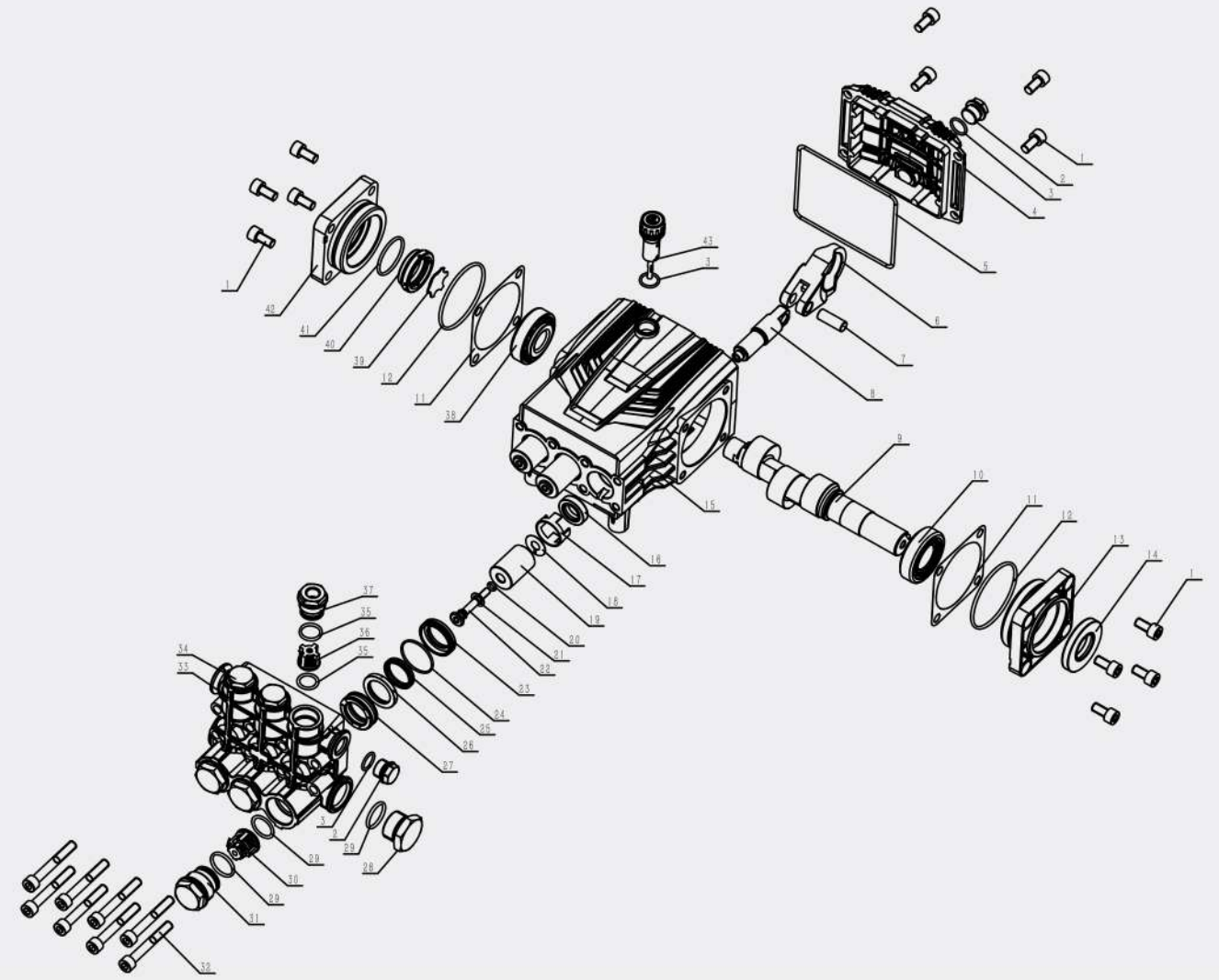


JPC-N



JPC-N 1450rpm N Shaft Φ24mm

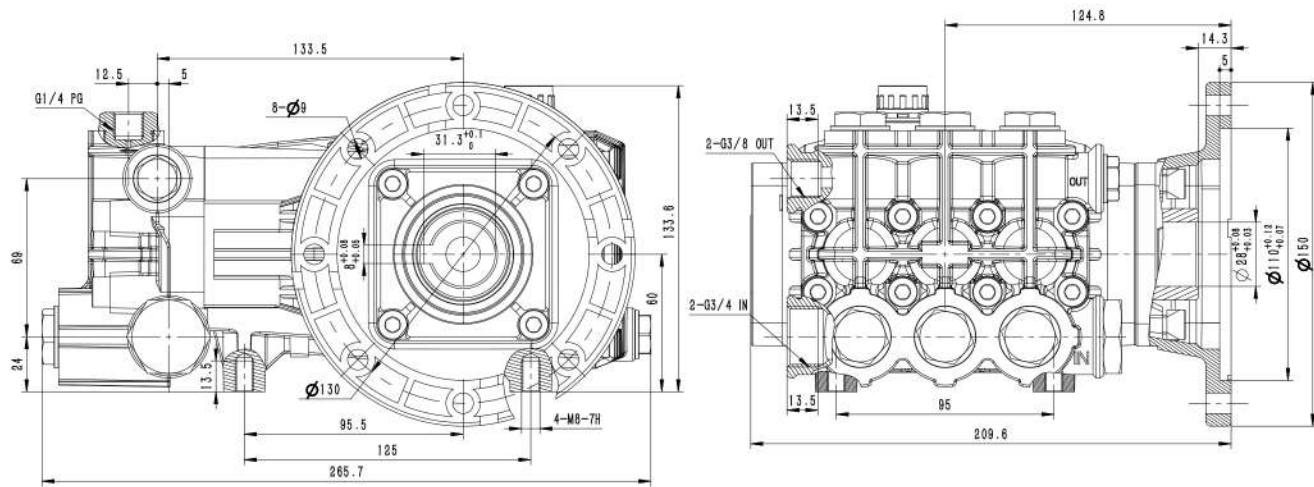
Model	Flow		Pressure		Power		Speed	Plunger Dia	Stroke
Model	L/min	gpm	Bar	psi	hp	kw	rpm	mm	mm
JPC1135-N	11	2.9	350	5075	10	7.5	1450	18	10
JPC1535-N	15	4.0	350	5075	15	11	1450	18	14
JPC1935-N	19	5.0	350	5075	20	15	1450	20	14
JPC2110-N	21	5.5	100	1450	5.5	4	1450	25	10
JPC2330-N	23	6.1	300	4350	20	15	1450	22	14
JPC3010-N	30	7.9	100	1450	7.5	5.5	1450	25	14
JPC3510-N	35	9.2	100	1450	7.5	5.5	1450	25	16.5



No.	Commodity	Qty	No.	Commodity	Qty
1	Hexagon screw	12	23	JPC25 aux water seal bushing	3
2	Plug	1	24	O ring	3
3	O ring	3	25	aux water seal	3
4	JPC back cover	1	26	JPC25 pressure ring	3
5	O ring	1	27	mainly water seal	3
6	JPC connecting Rod	3	28	plug	1
7	JPB Plunger pin	3	29	O ring	7
8	JPB Plunger	3	30	JPC25 inlet checking valve	3
9	JPC crankshaft	1	31	JPD inlet checking valve screw	3
10	roller bearing	1	32	Hexagon screw	8
11	JPC adjust gasket	2	33	JPC25 pump manifold	1
12	O ring	2	34	JPB Onlet checking valve screw	2
13	JPC connecting flange N	1	35	O ring	6
14	TC oil seal	1	36	JPB inlet checking valve	3
15	JPC crankcase	1	37	JPC gauge plug	1
16	TC4 oil seal	3	38	roller bearing	1
17	JPB bracket	3	39	JPD level indicator	1
18	JPB wiper	3	40	JPD oil window	1
19	JPC25 ceramic tube	3	41	O ring	1
20	O ring	3	42	JPC side cover	1
21	JPB seal pad	3	43	JPD oil dipstick	1
22	JPB locking screw	3			



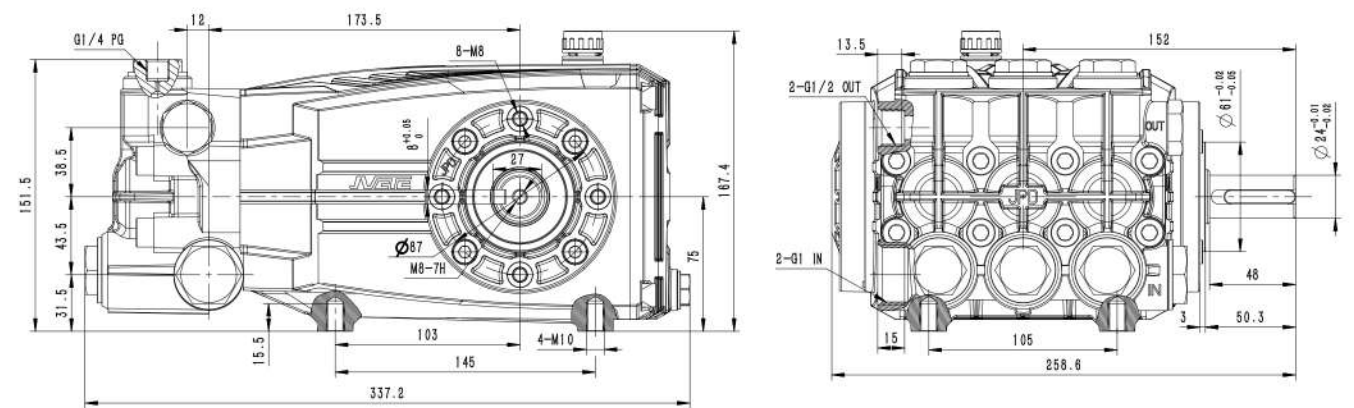
JPC-C



JPC-C 1450rpm C Shaft Φ 28mm

Model	Flow		Pressure		Power		Speed	Plunger dia	stroke
	L/min	gpm	Bar	psi	hp	kw			
JPC1135-C	11	2.9	350	5075	10	7.5	1450	18	10
JPC1535-C	15	4.0	350	5075	15	11	1450	18	14
JPC1935-C	19	5.0	350	5075	20	15	1450	20	14
JPC2110-C	21	5.5	100	1450	5.5	4	1450	25	10
JPC2330-C	23	6.1	300	4350	20	15	1450	22	14
JPC3010-C	30	7.9	100	1450	7.5	5.5	1450	25	14

JPD

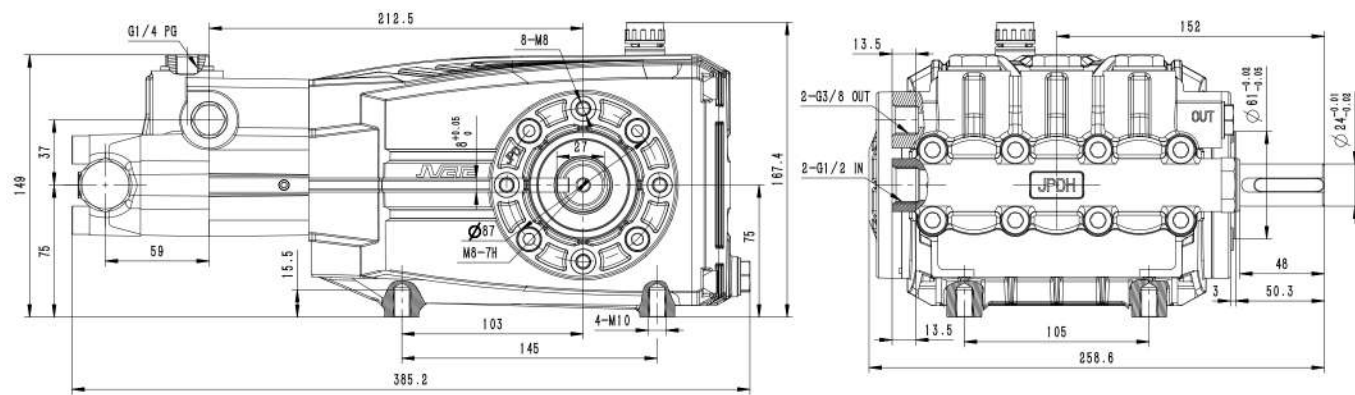


JPD 1450rpm N Shaft Φ 24mm

Model	Flow		Pressure		Power		Speed	Plunger Dia	Stroke
	L/min	gpm	Bar	psi	hp	kw			
JPD3020	30	7.93	200	2900	15	11	1450	28	11
JPD4020	40	10.6	200	2900	20	15	1450	28	15
JPD5210	52	13.7	100	1450	15	11	1450	32	15
JPD5615	56	14.8	150	2175	20	15	1450	28	21
JPD7310	73	19.3	100	1450	20	15	1450	32	21



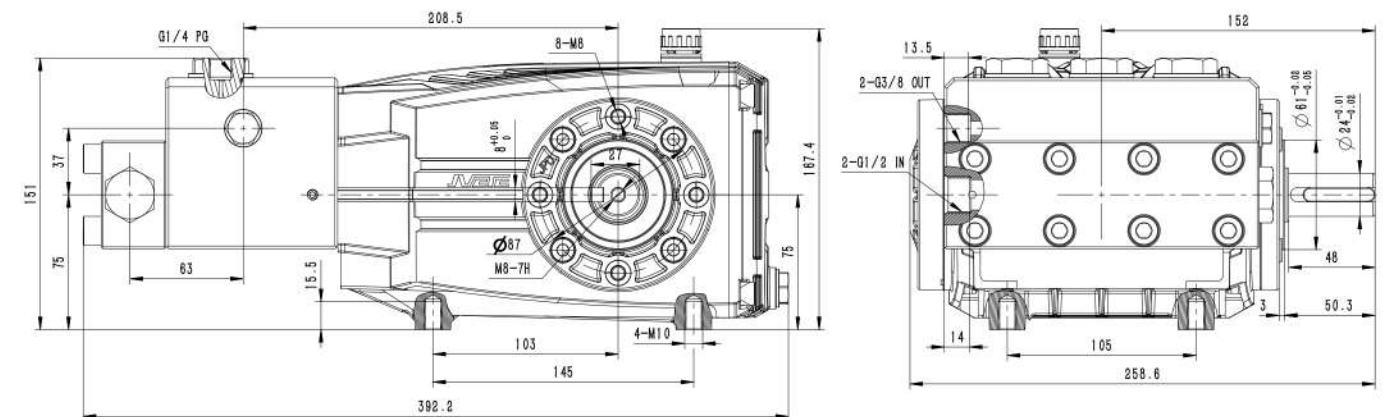
JPDH



JPDH 1450rpm N Shaft Φ 24mm

Model	Flow		Pressure		Power		Speed rpm	Plunger Dia mm	Stroke mm
	L/min	gpm	Bar	psi	hp	kw			
JPDH1250	12	3.17	500	7150	13	11	1450	18	11
JPDH1650	16	4.2	500	7150	20	15	1450	18	15
JPDH1850	18	4.8	500	7150	22	18.5	1450	16	21
JPDH2250	22	5.8	500	7150	30	22	1450	18	21
JPDH2850	28	7.4	500	7150	35	30	1450	20	21

JPDS

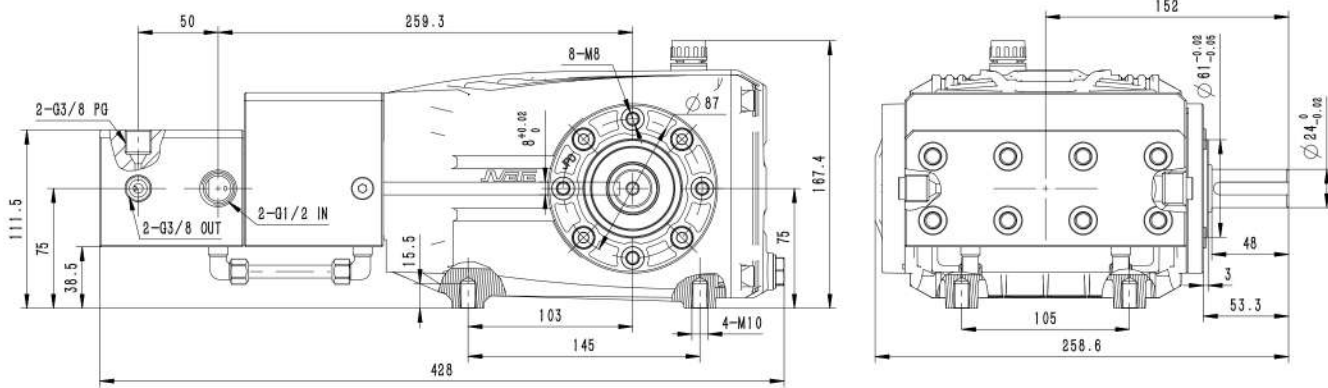


JPDS 1450rpm N Shaft Φ 24mm

Model	Flow		Pressure		Power		Speed rpm	Plunger Dia mm	Stroke mm
	L/min	gpm	Bar	psi	hp	kw			
JPDS1660	16	4.2	600	8700	24	18.5	1450	18	15
JPDS2260	22	5.8	600	8700	34	30	1450	18	21
JPDS2850	28	7.4	500	7250	36	30	1450	20	21
JPDS1870	18	4.8	700	10150	30	22	1450	16	21



JPDT

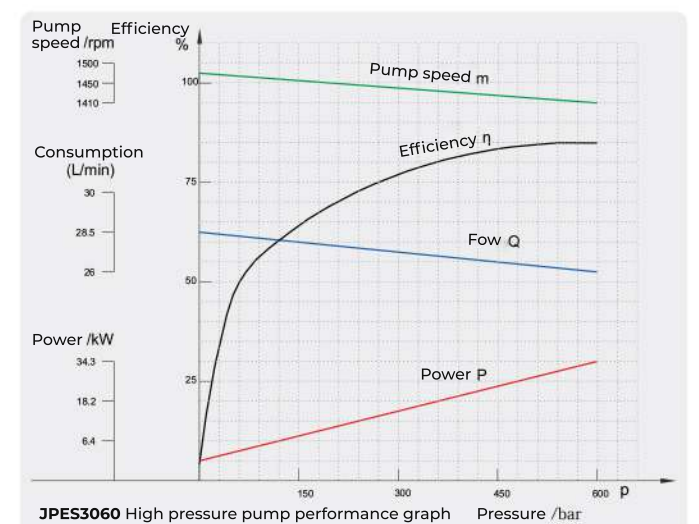
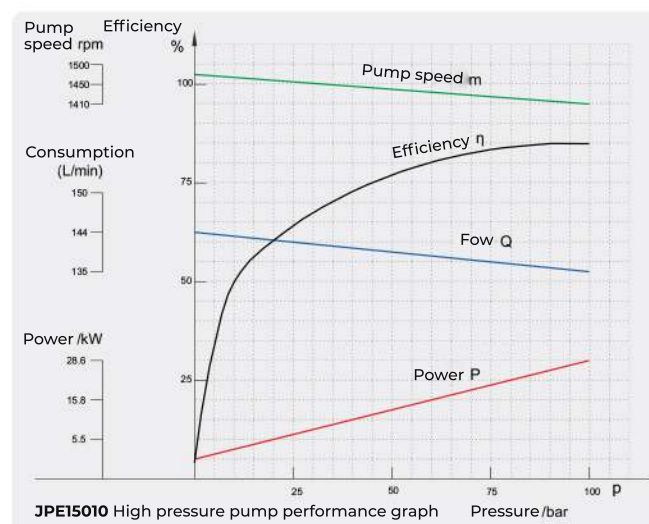
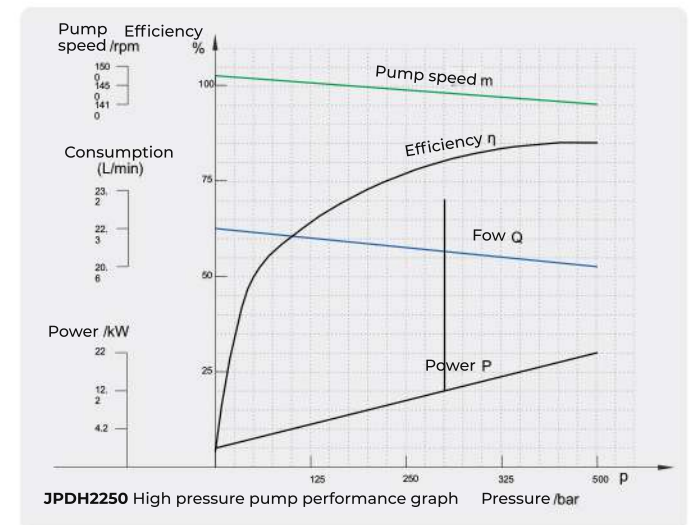
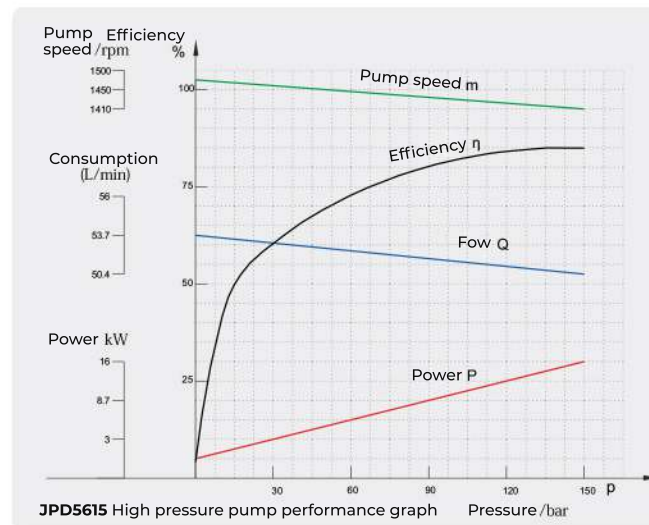
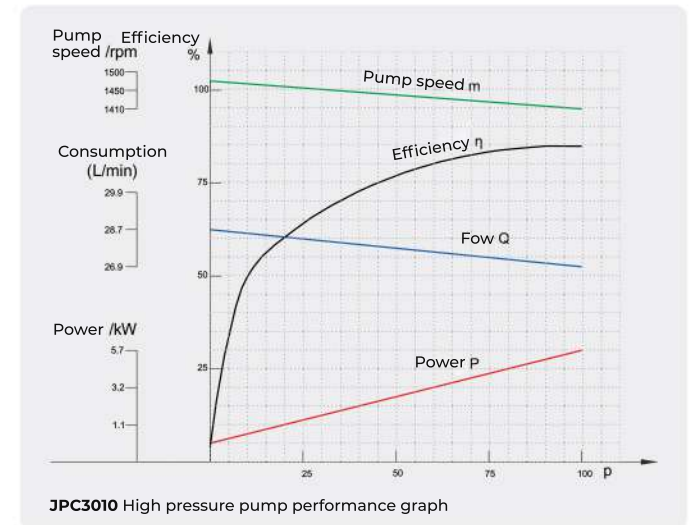
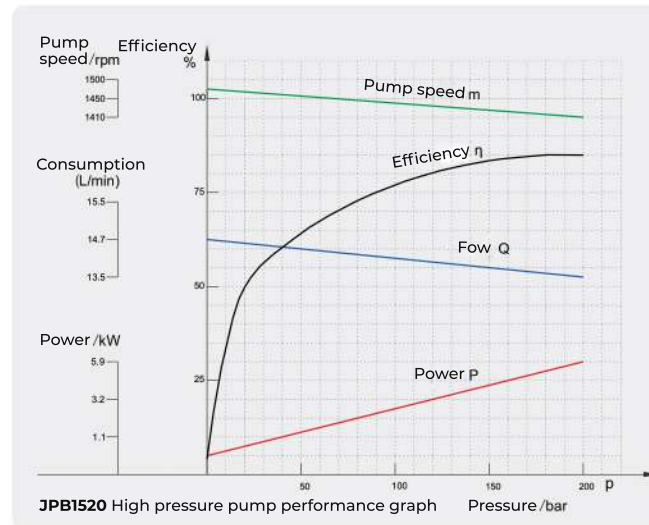


JPDT 1450rpm N Shaft Φ 24mm

Model	Flow		Pressure		Power		Speed	Plunger Dia	Stroke
	L/min	gpm	Bar	psi	hp	kw			
JPDT07150	7	1.85	1500	21750	30	18.5	1450	10	21
JPDT10120	10	2.64	1200	17400	30	22	1450	12	21
JPDT1880	18	4.8	800	11600	36	30	1450	16	21



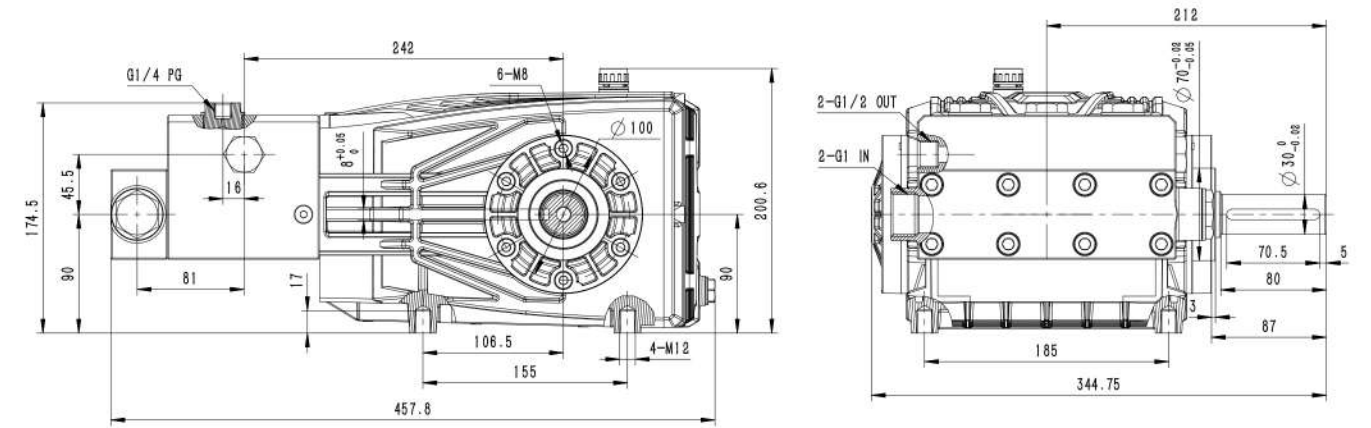
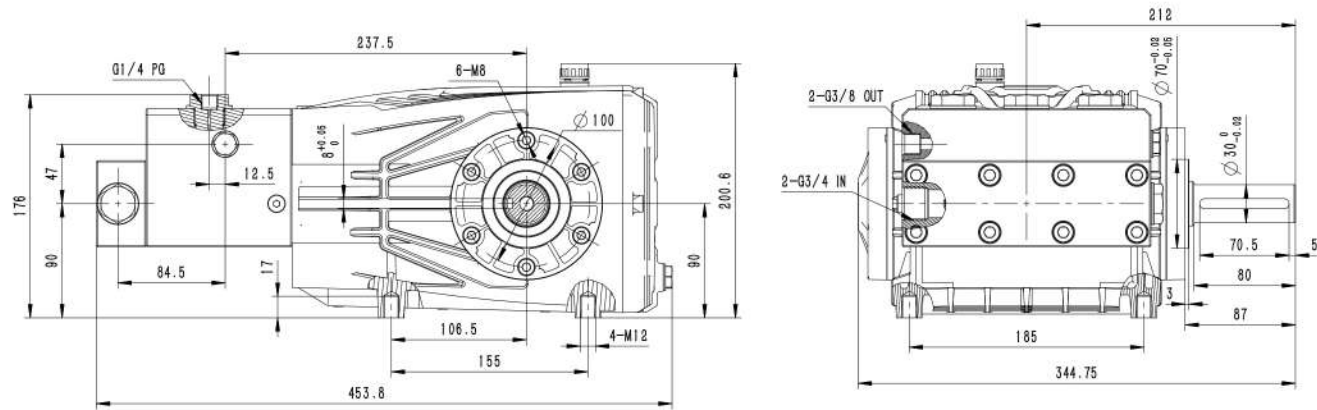
High pressure pump performance curve





JPES

JPES



JPES 1450rpm N ShaftΦ30mm

Model	Flow		Pressure		Power		Speed rpm	Plunger Dia mm	Stroke mm
	L/min	gpm	Bar	psi	hp	kw			
JPES2470	24	6.3	700	10150	50	37	1450	16	27.5
JPES3060	30	7.9	600	8700	50	37	1450	18	27.5
JPES3750	37	9.9	500	7250	50	37	1450	20	27.5
JPES4540	45	11.9	400	5800	50	37	1450	22	27.5

JPES 1450rpm N Shaft Φ30mm

Model	Flow		Pressure		Power		Speed rpm	Plunger dia mm	Stroke mm
	L/min	gpm	Bar	psi	hp	kw			
JPES5830	58	15.3	300	4350	40	30	1450	25	27.5
JPES7328	73	19.3	280	4060	50	37	1450	28	27.5
JPES8520	85	22.4	200	2900	40	30	1450	30	27.5

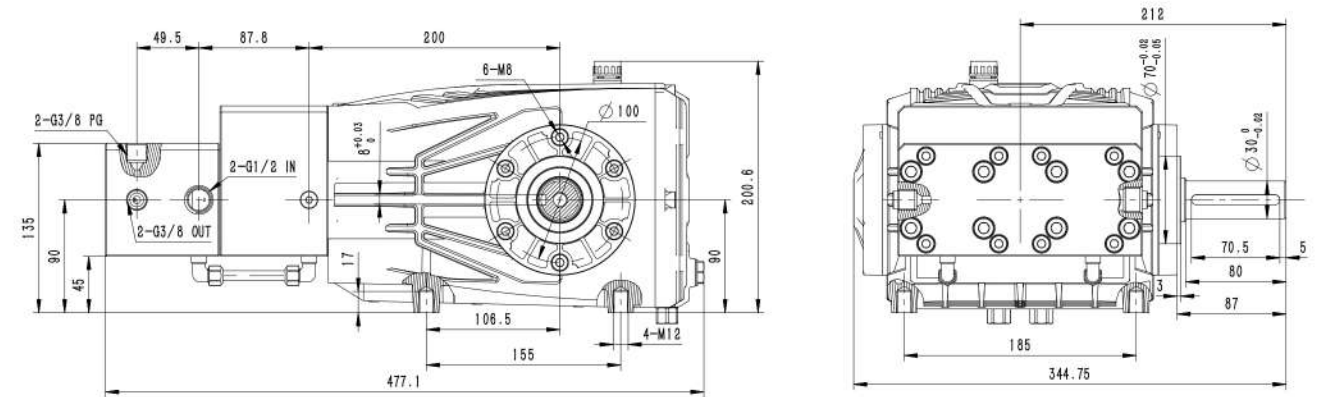


HIGH PRESSURE PLUNGER PUMP



JPET

Extra High Pressure

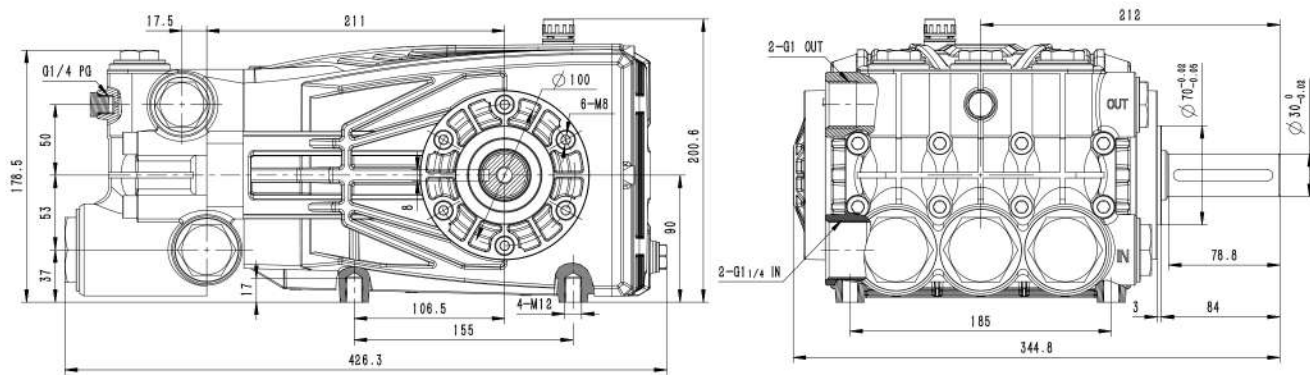


JPET 1450rpm N Shaft Φ 30mm

Model	Flow		Pressure		Power		Speed rpm	Plunger Dia mm	Stroke mm
	L/min	gpm	Bar	psi	hp	kw			
JPET09150	9	2.38	1500	21750	30	22	1450	10	27.5
JPET13150	13.5	3.57	1500	21750	40	30	1450	12	27.5
JPET18100	18	4.76	1000	14500	40	30	1450	14	27.5
JPET2490	24	6.34	900	13050	50	37	1450	16	27.5
JPET3075	30	7.94	750	10875	50	37	1450	18	27.5



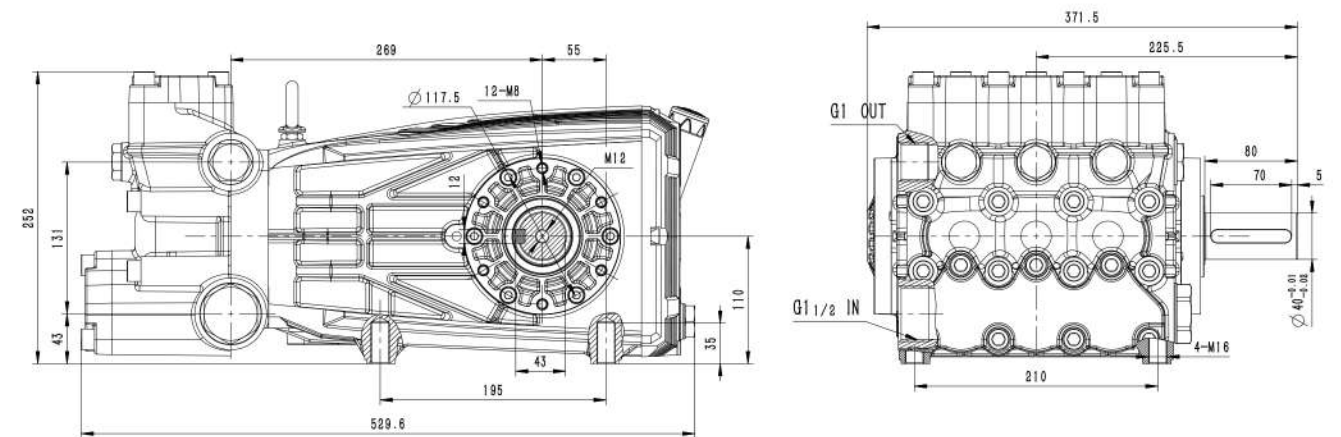
JPE



JPE 1450rpm N Shaft Φ 30mm

Model	Flow		Pressure		Power		Speed	Plunger Dia	Stroke
Model	L/min	gpm	Bar	psi	hp	kw	rpm	mm	mm
JPE32	96	25.4	180	2610	40	30	1450	32	27.5
JPE36	121	32	130	1885	40	30	1450	36	27.5
JPE40	150	39.6	100	1450	40	30	1450	40	27.5
JPE45	131	34.6	100	1450	30	26	1000	45	27.5
	118	31.2	100	1450	28	24	900		
	105	27.7	100	1450	26	22	800		

JPF



JPF 1000rpm N Shaft Φ 40mm

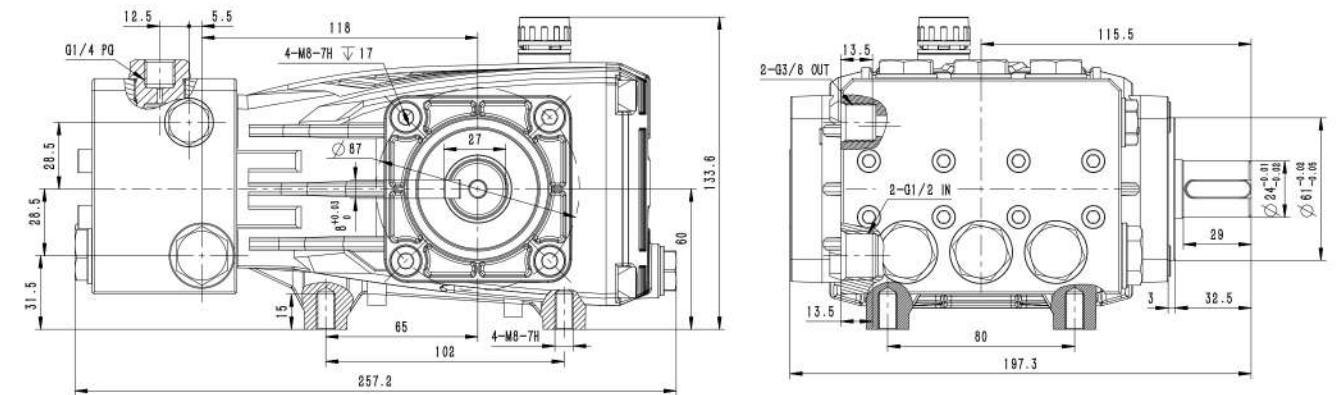
Model	Flow		Pressure		Power		Speed	Plunger Dia	Stroke
Model	L/min	gpm	Bar	psi	hp	kw	rpm	mm	mm
JPF32	120	31.7	160	2320	50	37	1000	32	50
JPF36	152	40.1	130	1885	50	37	1000	36	50
JPF40	188	49.6	110	1595	50	37	1000	40	50
JPF45	238	63.1	80	1160	50	37	1000	45	50



316 STAINLESS STEEL HIGH PRESSURE PUMP



JPBF-N

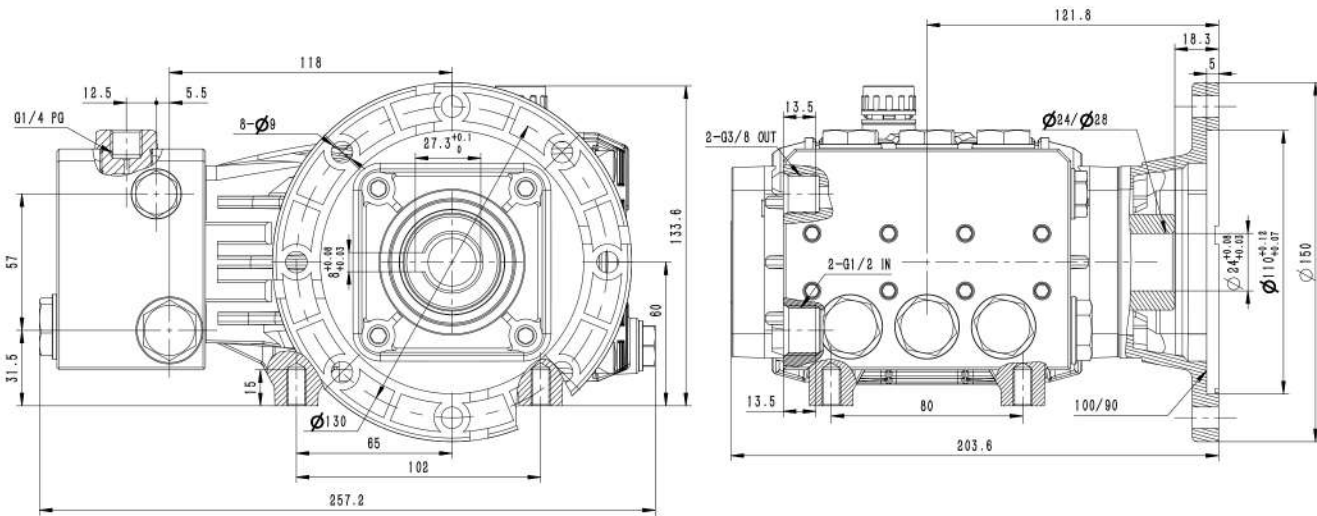


JPBF 1450 N Shaft Φ 24mm 316 Stainless Steel Pump

Model	Flow		Pressure		Power		Speed rpm	Plunger Dia mm	Stroke mm
	L/min	gpm	Bar	psi	hp	kw			
JPBF0510-N	5	1.3	100	1450	1.5	1.1	1450	18	5
JPBF0810-N	8	2.1	100	1450	2	1.5	1450	18	7
JPBF1110-N	11	2.9	100	1450	3	2.2	1450	18	10
JPBF1310-N	13	3.4	100	1450	4	2.2	1450	18	12
JPBF1510-N	15	4	100	1450	4	3	1450	18	14



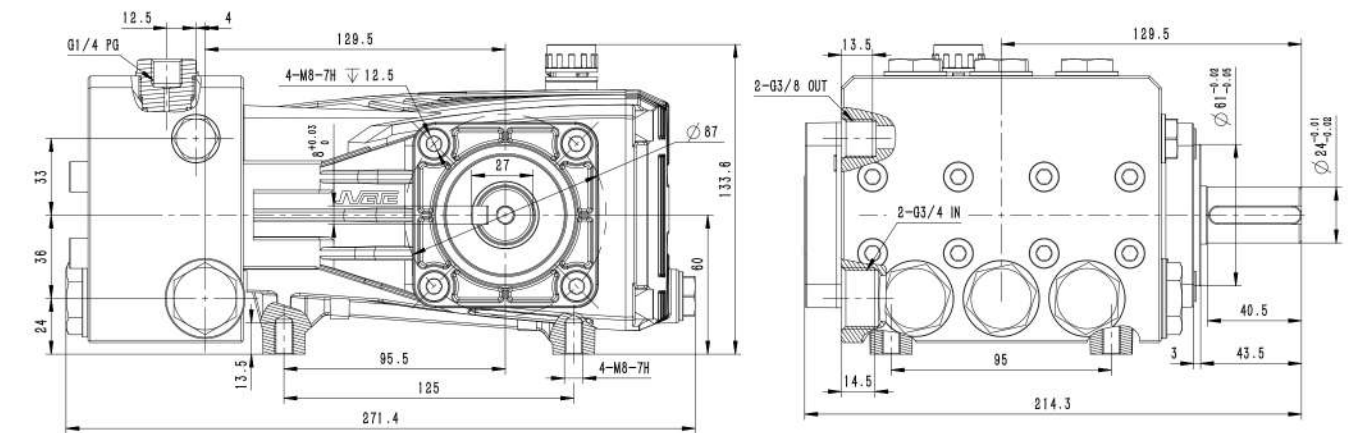
JPBF-C



JPBF 1450 C Shaft Φ 24mm Φ 28mm 316 Stainless Steep Pump

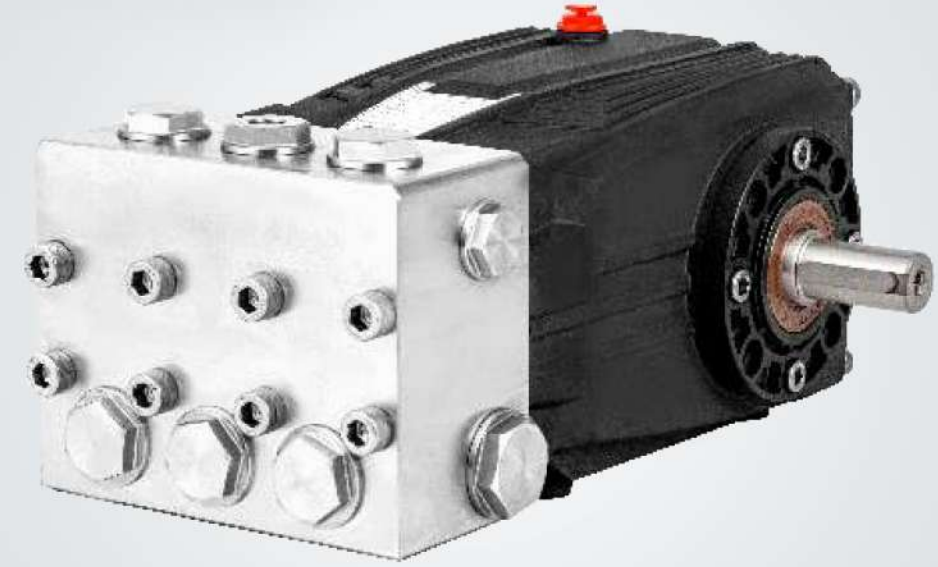
Model	Flow		Pressure		Power		Speed	Plunger Dia	Stroke
	L/min	gpm	Bar	psi	hp	kw			
JPBF0510-C	5	1.3	100	1450	1.5	1.1	1450	18	5
JPBF0810-C	8	2.1	100	1450	2	1.5	1450	18	7
JPBF1110-C	11	2.9	100	1450	3	2.2	1450	18	10
JPBF1310-C	13	3.4	100	1450	4	2.2	1450	18	12
JPBF1510-C	15	4	100	1450	4	3	1450	18	14

JPCF-N

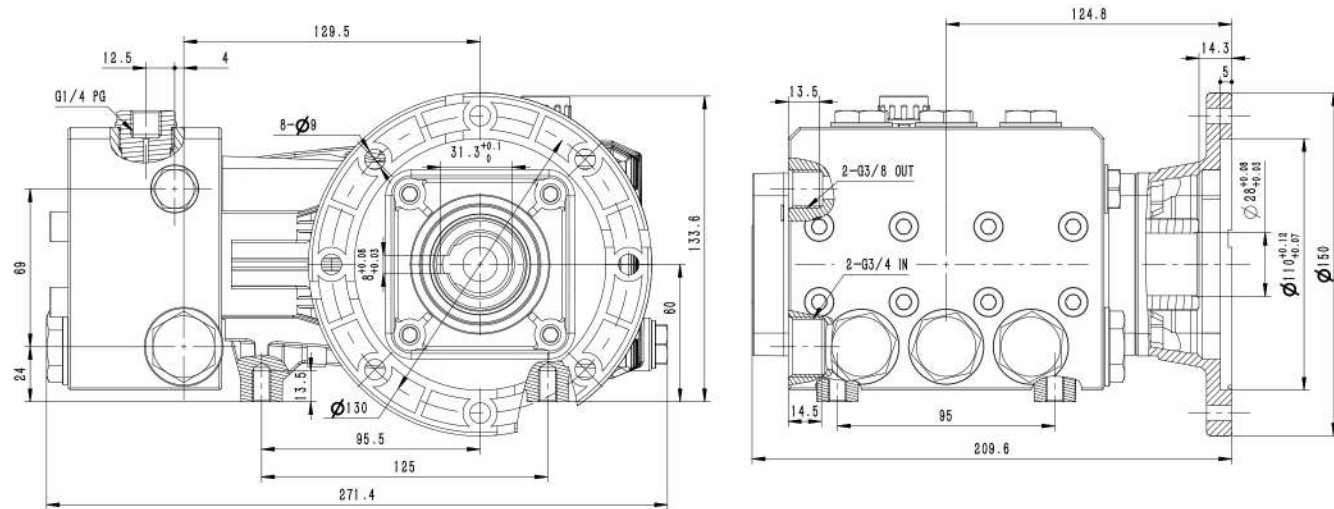


JPCF 1450 N Shaft Φ 24mm 316 Stainless Steel Pump

Model	Flow		Pressure		Power		Speed	Plunger Dia	Stroke
	L/min	gpm	Bar	psi	hp	kw			
JPCF2110-N	21	5.5	100	1450	5.5	4	1450	25	10
JPCF3010-N	30	7.9	100	1450	7.5	5.5	1450	25	14



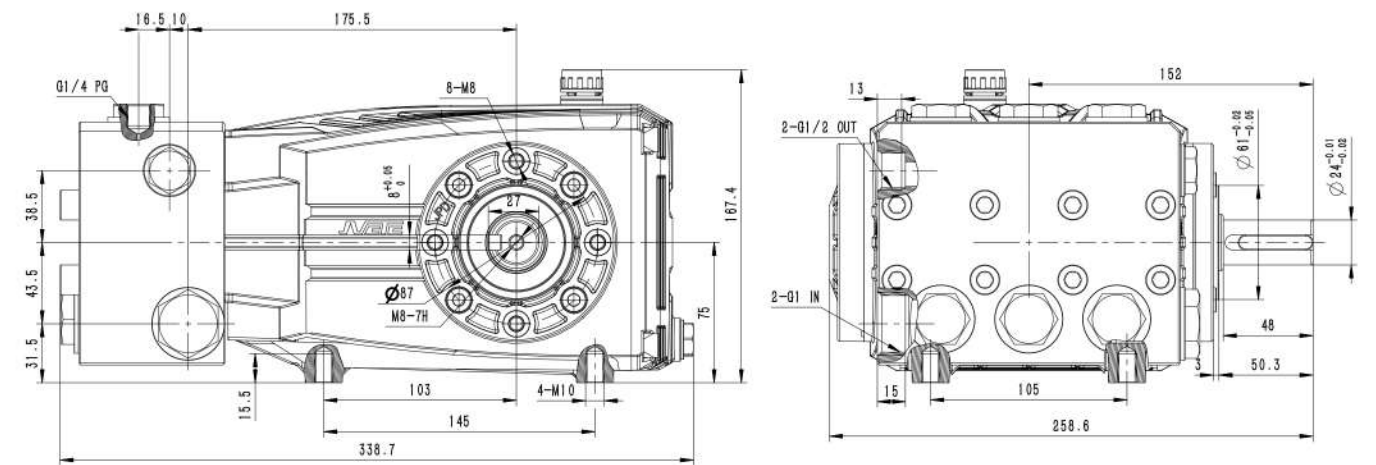
JPCF-C



JPCF 1450 C Shaft Φ 28mm 316 Stainless Steel Pump

Model	Flow		Pressure		Power		Speed	Plunger Dia	Stroke
	L/min	gpm	Bar	psi	hp	kw			
JPCF2110-C	21	5.5	100	1450	5.5	4	1450	25	10
JPCF3010-C	30	7.9	100	1450	7.5	5.5	1450	25	14

JPDF



JPDF 1450 N Shaft Φ 24mm 316 Stainless Steel Pump

Model	Flow		Pressure		Power		Speed	Plunger Dia	Stroke
	L/min	gpm	Bar	psi	hp	kw			
JPDF4010	40	10.6	100	1450	10	7.5	1450	28	15
JPDF5610	56	14.8	100	1450	15	11	1450	28	21



EJPB-C

EJPB-C SERIES Pump With Motor

Model	Flow		Pressure		Power		Speed	Power
Model	L/min	gpm	Bar	psi	hp	kw	rpm	V/HZ
EJPB-C0510	5	1.3	100	1450	1.5	1.1	1450	220/50
EJPB-C0818	8	2.1	180	2610	4	3	1450	220/50
EJPB-C1120	11	2.9	200	2900	6	4	1450	380/50
EJPB-C1320	13	3.4	200	2900	7	5.5	1450	380/50
EJPB-C1520	15	4	200	2900	7.5	5.5	1450	380/50
EJPB-C1910	19	5	100	1450	5.5	4	1450	380/50



EJPC-C

EJPC-C SERIES Pump With Mtor

Model	Flow		Pressure		Power		Speed	Power
Model	L/min	gpm	Bar	psi	hp	kw	rpm	V/HZ
EJPC-C1135	11	2.9	350	5075	10	7.5	1450	380/50
EJPC-C1535	15	4.0	350	5075	15	11	1450	380/50
EJPC-C1935	19	5.0	350	5075	20	15	1450	380/50
EJPC-C2110	21	5.5	100	1450	5.5	4	1450	380/50
EJPC-C2330	23	6.1	300	4350	20	15	1450	380/50
EJPC-C3010	30	7.9	100	1450	7.5	5.5	1450	380/50



EJPD

EJPD SERIES Pump With Motor

Model	Flow		Pressure		Power		Speed	Power
Model	L/min	gpm	Bar	psi	hp	kw	rpm	V/HZ
EJPD4020	40	10.6	200	2900	20	15	1450	380/50
EJPD5210	52	13.7	100	1450	15	11	1450	380/50
EJPD5615	56	14.8	150	2175	20	15	1450	380/50
EJPD7310	73	19.3	100	1450	20	15	1450	380/50



EJPBF-C

EJPBF-C SEIES Stainless Steel Pump With Motor

Model	Flow		Pressure		Power		Speed	Power
Model	L/min	gpm	Bar	psi	hp	kw	rpm	V/HZ
EJPBF-C0510	5	1.3	100	1450	1.5	1.1	1450	220/50
EJPBF-C0810	8	2.1	100	1450	2	1.5	1450	220/50
EJPBF-C1110	11	2.9	100	1450	3	2.2	1450	220/50
EJPBF-C1310	13	3.4	100	1450	4	2.2	1450	220/50
EJPBF-C1510	15	4	100	1450	4	3	1450	380/50



EJPCF-C

EJPCF-C SERIES Stainless Steel Pump With Motor

Model	Flow		Pressure		Power		Speed	Power
Model	L/min	gpm	Bar	psi	hp	kw	rpm	V/HZ
EJPCF-C2110	21	5.5	100	1450	5.5	4	1450	380/50
EJPCF-C3010	30	7.9	100	1450	7.5	5.5	1450	380/50

Regulate Valve



Model	Flow		Pressure		Inlet	Outlet	Backwater	Temperature
	L/min	gpm	Bar	psi	Inlet	Outlet	Backwater	°C
JV25-Kinternal	30	7.9	0-250	0-3625	G3/8	option	/	80
JV25-Kexternal	30	7.9	0-250	0-3625	G3/8	option	G1/4	80
JV25 internal	30	7.9	0-250	0-3625	G3/8	option	/	80
JV25 external	30	7.9	0-250	0-3625	G3/8	option	G1/4	80

Regulate Valve



Model	Flow		Pressure		Inlet	Outlet	Backwater	Temperature
	L/min	gpm	Bar	psi	Inlet	Outlet	Backwater	°C
JV30	85	22.5	0-300	0-4350	G1/28	G1/2	G1/2	90
JV35	40	10.6	0-350	0-5075	G3/8	G3/8	G1/2	90
JV50	80	21.1	0-500	0-8700	G1/2	G1/2	G1/2	90
JV90	60	15.8	0-900	0-13050	G1/2	G1/2	G1/2	60
JV150	30	10.6	0-1000	14500	G3/8	G3/8	G3/8	60

Safety Valve



Model	Flow		Pressure		Inlet	Outlet	Backwater
	L/min	gpm	Bar	psi	Inlet	Outlet	Backwater
JS20	200	52.8	0-200	0-2900	G3/4	/	G1/2
JS30	500	132	0-300	0-4350	G1	1	G1
JS70	80	21.1	0-700	0-10150	G3/8	/	/
JS70	80	21.1	0-700	0-10150	G1/2	/	/
JS80	80	21.1	0-800	0-11600	G3/8	/	G1/2
JS150	30	7.8	0-1500	0-21750	G3/8	/	G3/8
JSF15	40	10.6	0-200	0-2900	G3/8	/	G3/8

Regulate Valve



Model	Flow		Pressure		Inlet	Outlet	Backwater	Temperature
	L/min	gpm	Bar	psi	Inlet	Outlet	Backwater	°C
JVF32	80	21.1	0-320	0-4640	G1/2	G1/2	G1/2	90
JV60	80	21.1	0-600	0-8700	G1/2	G1/2	G1/2	90
JV80	80	21.1	0-800	0-11600	G1/2	G1/2	G1/2	90
JV20	200	52.8	0-150	0-2175	G1	G1	G1	90
JV20S	200	52.8	0-150	0-2175	G1	G1	G1	90



V mainly water seal



U mainly water seal



JPDH mainly water seal



Aux water seal



ceramic tube



install cover



JPC checking valve



JPDH checking valve



JPD checking valve



JPES checking valve



JPE outlet checking valve



D48x56.5



D48x56.5 checking valve



D54x56.8



D54x56.8 checking valve



D72x73



D55.5x56



couplingA



couplingB



coupling C



quick connector



liquid suction



APPLICATION AREA

